

WB230



Wakeboat Stern Thruster

DESCRIPTION

The WB230 Stern Thruster has been developed specifically for wakeboats with a horizontal wake-shaping plate for extremely easy mounting. The thruster can also be mounted to the boat's transom on models where there is sufficient space and side clearance.

The powerful, water-cooled 12V motor and heavy-duty 8" aluminum propeller provide instant lateral thrust for stress-free docking and open-water maneuvering. The thruster is anode protected and available in three beautiful polychromatic(metal flake) colors to complement the high-end look of any sports boat.

TECHNICAL DATA

Typical Boat Size	Boats from 20'(6m) to 30'(9m) in length
Motor Voltage	12 VDC
Motor Amperage	300 Amps
Motor Horse Power	2.5 HP
RPM	3000 RPM
Motor Duty Cycle	Run time 30 sec Cool down 10 sec
Propulsion System	Single 8" Aluminum Propeller
Joystick Voltage	12V
Exterior Finish	Interlux Protect 2000 Epoxy Primer and Acrylic Urethane Polychromatic Enamel Topcoat



Benefits

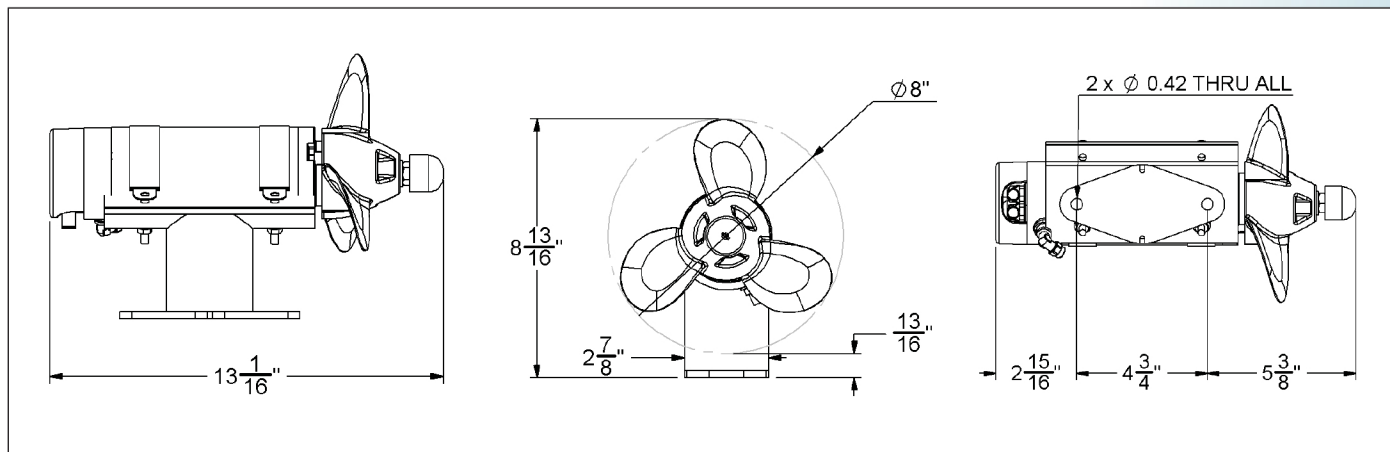
- **Universal Mounting On Most Wake Boats and Sports Boats**
- **Easy DIY Installation in <1 Day**
- **No Space Required Inside the Boat for Tunnel or Motor**
- **All Inclusive Kit**
- **No additional battery required-
Min 850CCA rating**
- **Rugged and Reliable**

Kit Contents:

Installation Kit with all Hardware
 10' Wiring Harness
 Motor Controller
 Wireless Joystick & Key Fob
 Fuse with Digital Voltage Indicator
 Battery Switch
 Installation Manual



MECHANICAL DIMENSIONS



Allows operation of thruster from anywhere on boat or dock.



Helm-mounted Thruster Control.

