

# SS350

## BOW THRUSTER

### DESCRIPTION

The SS350 Bow Thruster from Sideshift is perfect for most boats up to 50' in length; the unit mounts on the exterior of a V-shaped bow. This creates a forward pivot point that gives the boater optimum control.

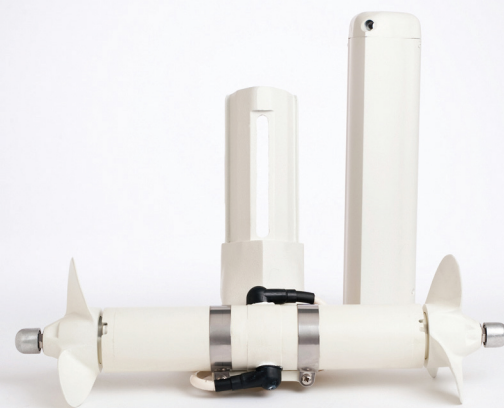
No expensive tunnel in the hull is required and all mounting holes are above the waterline. Offering an immediate response with its powerful water cooled 24V motor, the heavy-duty 8" aluminum propellers quickly pull the boat quietly and smoothly.

Saltwater proven, the rugged aluminum and stainless steel bow thruster is anode protected to prevent corrosion. It is finished with anti-foul-paint over epoxy primer.

Shipped as a complete kit with thruster, controller, wireless joystick, wiring and hardware, installation usually takes less than a day.

### TECHNICAL DATA

<b>Typical Boat Size</b>	Boats from 35'(10.7m) to 50'(15m) in length
<b>Motor Voltage</b>	24 VDC
<b>Motor Amperage</b>	400 Amps
<b>Motor Horse Power</b>	7.5 HP
<b>Motor Revolutions</b>	3000 RPM
<b>Motor Duty Cycle</b>	Run time 30sec Cool down 10 sec
<b>Propulsion System</b>	Two 8" Propellers
<b>Joystick Voltage</b>	12V
<b>Exterior Finish</b>	Interlux Protect 2000 Epoxy Primer and Tri-Lux 498 Anti-Fouling Paint
<b>Battery Requirements</b>	Two 12V 850CCA Starting Type or Gel Cell Battery



### Benefits

- **Stress-free Docking in Any Weather**
- **No Holes Below the Waterline**
- **DIY Installation in <1 Day**
- **Easy Maneuvering in Narrow Waterways**
- **No Space Required Inside the Boat for Tunnel or Motor**
- **All Inclusive Kit Packaging**
- **Rises Out of Water When Boat Planes**
- **Rugged and Reliable**

### Kit Contents:

Installation Kit with all Hardware  
 10' Wiring Harness  
 Motor Controller  
 Wireless Joystick  
 Installation Manual



The technical drawings show the stern assembly of the boat. The **FRONT VIEW** shows a central transom with a vertical support and two side-mounted propellers. Dimensions include a 3" DIA. (75 mm) for the propeller shafts and a 23 1/2" width between the propellers. The **SIDE VIEW** shows the boat's profile with the transom at an angle. Key dimensions include a transom height of 18 1/4" (465 mm), a note that it can be reduced to 6 inches (150 mm), a 5" MIN (125 mm) clearance from the waterline, a 27 1/2" (700 mm) transom width, and 8" DIA. (205 mm) PROPS.

Allows operation of thruster from anywhere on boat or dock. Suits all thruster models.



**Dual Joy Stick:  
Also Available in Black**  
Helm-mounted Bow and  
Stern Thruster Control.

